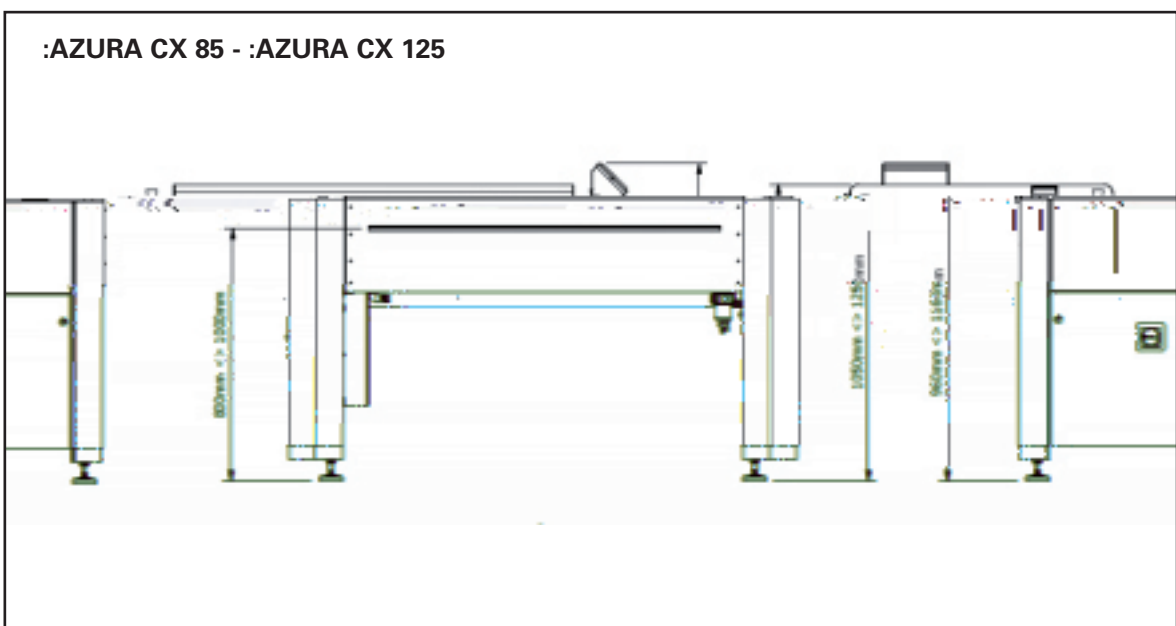


:AZURA CX 85 - 125

- Smart Eco friendly Clean-Out
- Low power consumption
- Azura Ease of use for High End
- Chemistry-free solution for high volume
- State of the art user interface



:AZURA CX 85 - :AZURA CX 125

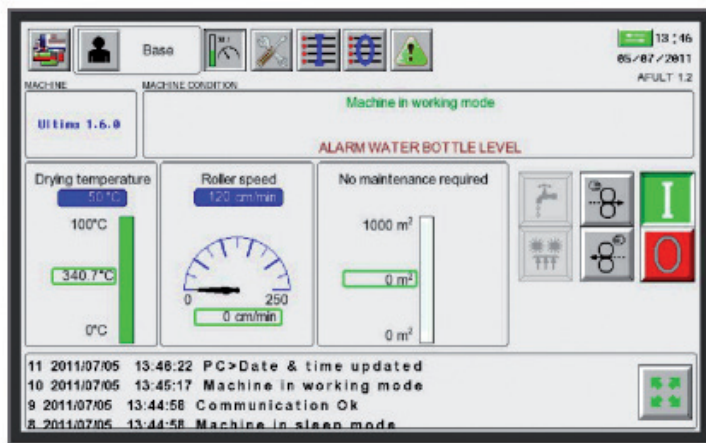


Clean-Out Units

Clean Out	AZURA CX 85	AZURA CX 125
Platesetters	Avalon N4, Avalon N8 + L-conveyor	Avalon N8, Avalon N16, Avalon N24-N36
Consumption	water: 7 ml/m ² gum: 20 ml/m ²	water: 8 ml/m ² gum: 25 ml/m ²
Plate width, min-max	200 - 850 (7.9 - 33.5")	200 - 1250 mm (7.9 - 49.0")
Plate length, min	310 - 1100 mm (12.2 - 43.3")	
Plate thickness, min-max	0.15 - 0.30 mm (0.006 - 0.012")	
Processing speed	60 cm/min (23.6"/min) , up to 160 cm/min (63"/min)	
Throughput (ID = 400)	83 pl/hr (landscape 745 x 605 mm) 67 pl/hr (portrait 1030 x 800 mm)	
Weight	crated: 300 kg (661 lb) uncrated: 240 kg (529 lb)	crated: 360 kg (793 lb) uncrated: 300 kg (661 lb)
Crate Dimensions W x D x H	1550 x 1100 x 1200 mm (61.0 x 43.5 x 30.5")	1950 x 1100 x 1200 mm (76.8 x 43.5 x 30.5")
Approvals	Complies with CE standards, c TUV US certification	
Standard equipment	Small footprint, dual brush, filter strainer, automatic container empty alarm, world-wide electrical configurable, user interface through a touchscreen control panel. Software features: <ul style="list-style-type: none"> • LAN connection possible • Logbook • Service tool • input/output status overview 	
Options	Feed table, exit table, drip tray Interface kit for: Agfa: Avalon SF/LF + PlateManager Acento & Acento II Heidelberg: Suprasetter 74 Topsetter 74 Screen: PT-R 4000 series Kodak: Trendsetter 400	Agfa: Avalon SF/LF straight Heidelberg: Suprasetter 105 (semi-automatic) Screen: PT-R 8000 series, Screen-conveyor in use Kodak: Trendsetter 800

Space requirements:

min. 0,8 m on left and right side
min. 1,0 m on front and rear side (off-line)



Touch panel graphical interface

